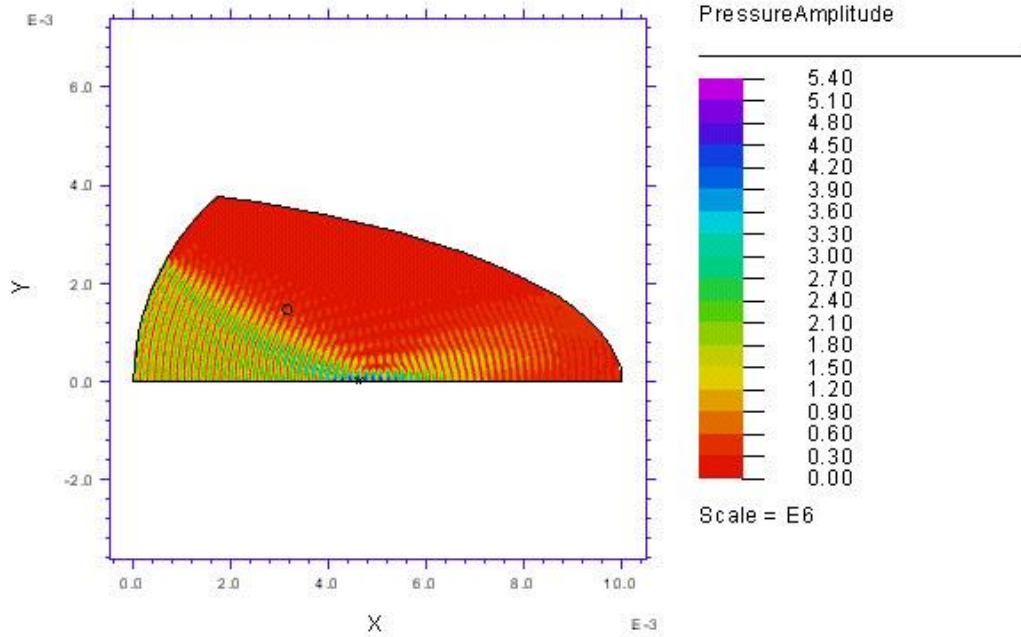


CW Pressure Amplitude Wave Field for a 5 MHz Cylindrical Transducer

Finite Element Analysis (FEA) using flexPDE

Acoustic Radiation from a Cylindrical X dcr at 5 MHz

16:31:52 1/18/00
FlexPDE 2.15b



CYLINDTICALF2XDCRPSTRESS02: Grid#1 p2 Nodes=25443 Cells=12542 RM S Err= 2.8e-4
Integral= 16.06578

Pressure unit is Pascals